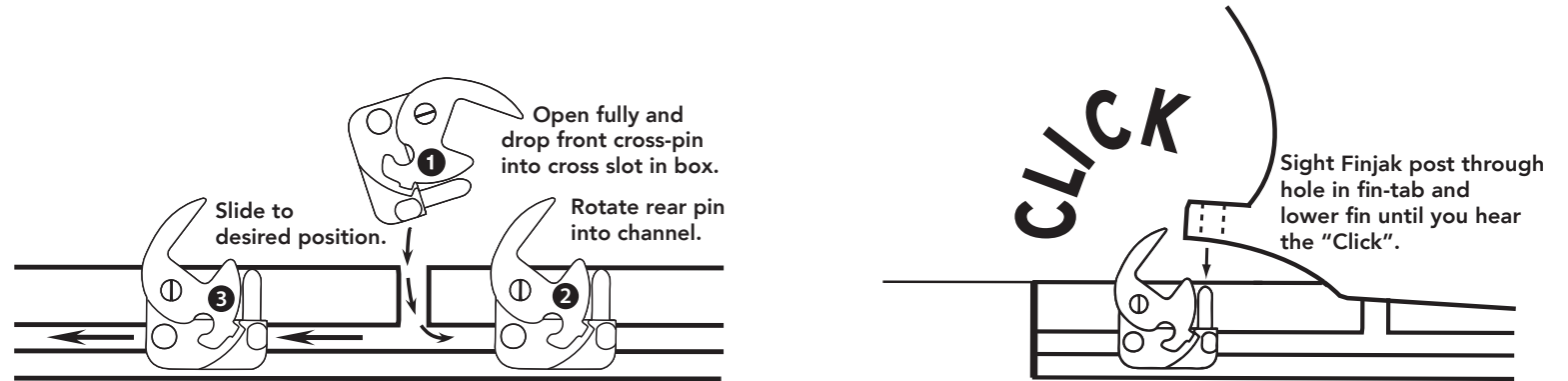


FINJAK INSTRUCTIONS



A properly fitting fin will be snug.

A fin that is too tight can get a perfect fit with a bit of sanding. A loose fin can be "shimmed" with resin.

Whether you're using the Finjak as a screw and plate, the fit of a particular fin in a box affects the ease of insertion and removal.

The Finjak was designed for rear-tabs.

With a front-tab, if you hit something in the water, it could release. This could be a good thing, saving a broken fin or box.

It's a good practice to check your board whenever you hit something, but especially when using a front-tab fin.

It takes some real effort to close a Finjak using your fingers - BUT IF YOU DO - simply insert a coin in the rear slot and pry halves apart.